

## TITLE

End of Animal

## Year

2010

## Duration

114...

## Color

color

## Format

16x9 Anamorphic

## Romance Drama

Mystery-Horror

## SRP

\$24.98

## UPC

825307929690

## CAT No.

PH-92969

## Carton Qty

30

## Studio

Pathfinder Home Ent..

## Media Format

DVD-5

## Order Date

Dec 25, 2012

## Sale Date

Jan 22, 2013

## Language

Korean w. ON/OFF Eng. subs

## Rating

NR

## Synopsis

"End of Animal" conjures up an apocalypse whose implications are out of all proportion with the film's own scale. You could think of it as a broken-down road movie. Soon-Young is travelling by taxi to her mother's place in Taeryung when the driver picks up a second passenger who soon reveals that he has no money or plastic to pay his share of the fare.

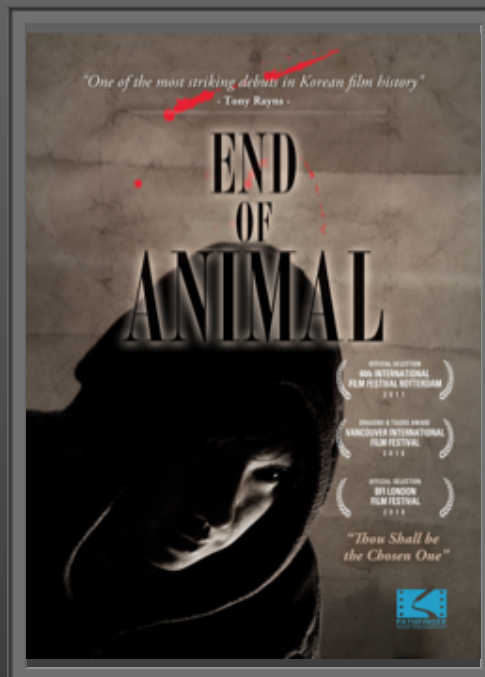
What the stranger does have, though, is uncanny insights into the minds of both Soon-Young and the driver (the latter's marriage has been in trouble since he was caught with an underage girl), and he goes on to predict that all electrical power will fail any moment now... which it does.

The driver walks ahead to seek help, the stranger vanishes and Soon-Young is left alone. Before you know it, the road has become a dog-eat-dog world in which everyone has dark secrets and no-one can be trusted. Only the stranger seems to have Soon-Young's best interests at heart, but he's never in touch when she needs him. Jo Sung-Hee's remarkable film reaches a heart of darkness that ordinary disaster movies cannot reach.

## Special Features &amp; Extras

16x9 anamorphic video, ON/OFF English subtitles, Trailer

## DVD Cover



## Director

Sung-hee Jo

## Cast

Min-ji-I Lee, Hae-il Park, Seung-mok Yoo, Se-jong-I Park, Yeong-ho-I Kim

## Additional Information

Maybe the most striking debut in Korean film history, this pocket-sized apocalypse shows the day when electricity disappears and the road becomes a dog-eat-dog world. -Tony Rayns

## Official Selection:

Rotterdam International Film Fest  
Vancouver International Film Fest  
BFI London Film Fest